

2600 WARRENVILLE ROAD

Available for Lease

DOWNERS GROVE, ILLINOIS



PROPERTY DETAILS

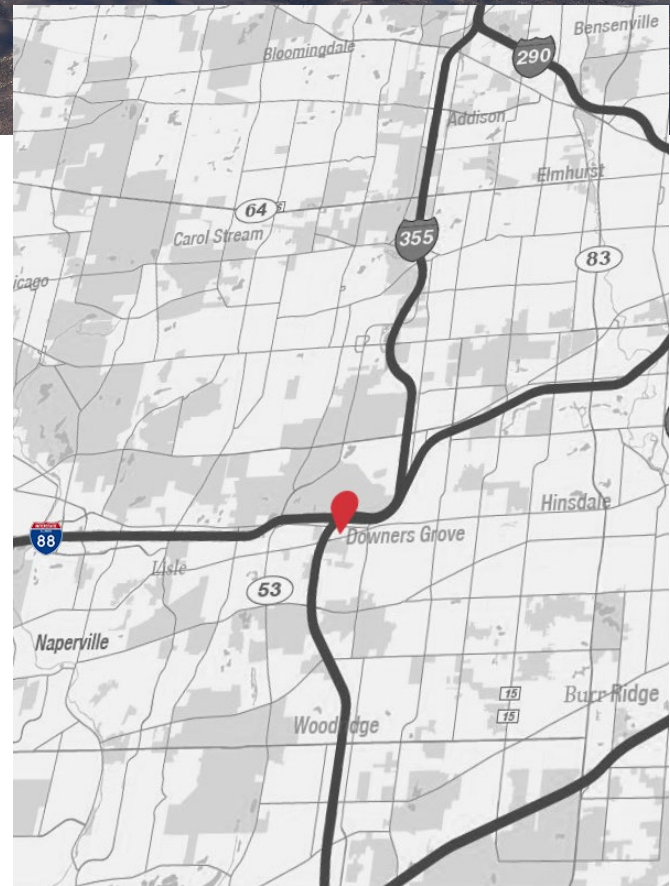
Suite 212 - 4,077 SF | 100% office

Rental Rate: \$14.50/SF Gross

CAM: \$2.48/SF | Taxes: \$2.37/SF

- *No common areas shared with other tenants*
- *No internal exposure to other tenants*
- *No elevator*
- *Tenant controlled HVAC*

- Access to the amenities at 2300 Warrenville Road which include conferencing, deli, fitness center
- AT&T fiber and Comcast available
- Parking ratio: 3.40/1,000 SF
- Monument signage available along Warrenville Road
- Located 1/2 mile to I-88 and I-355 Ogden Avenue access



[PROPERTY WEBSITE](#)

Tom Gnadt

630 693 0659

tgnadt@hiffman.com

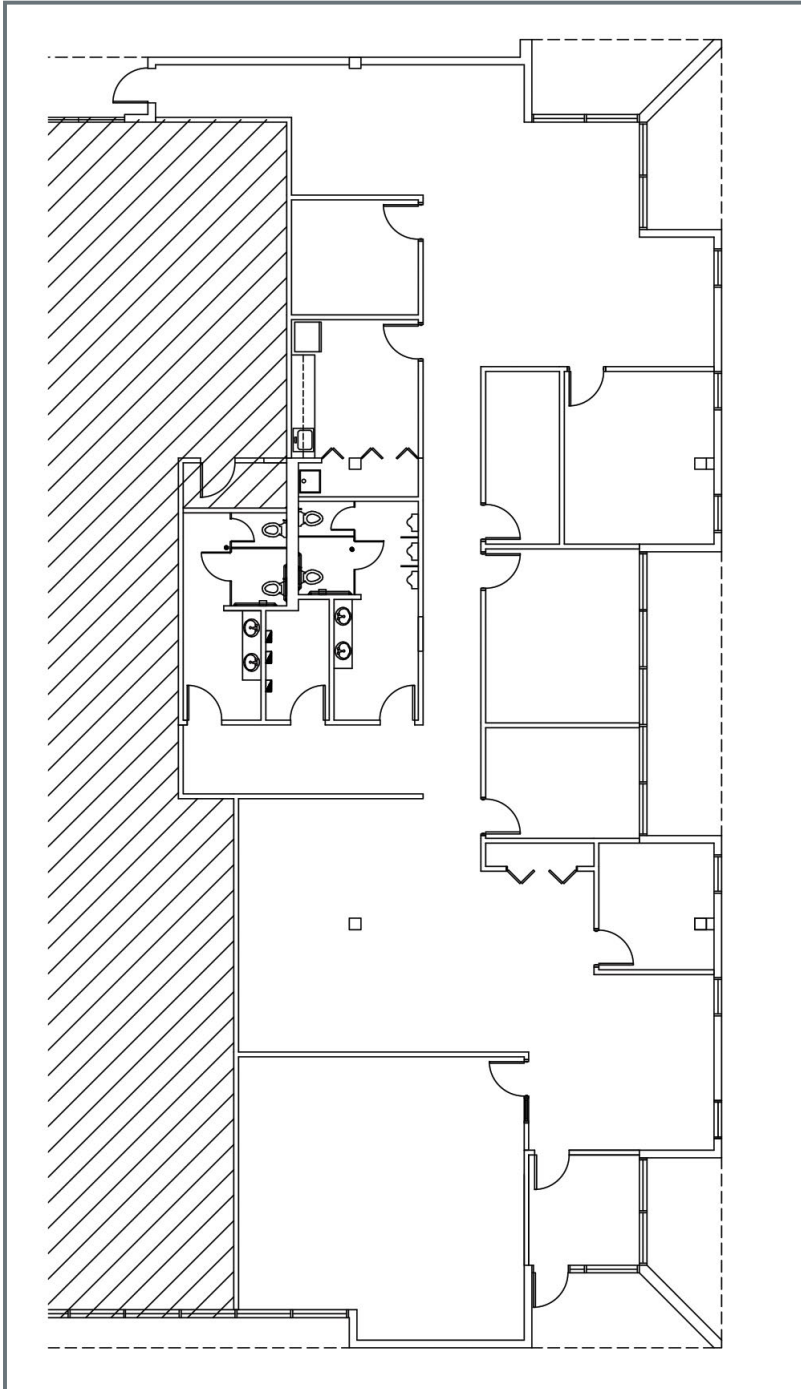
Adam Johnson

630 317 0728

ajohnson@hiffman.com

2600 WARRENVILLE ROAD, DOWNERS GROVE

4,077 SF Available



SUITE 212
4,077 SF
100% OFFICE

Owned & Managed by:



RE Development
Solutions