

2,279 SQUARE FEET AVAILABLE

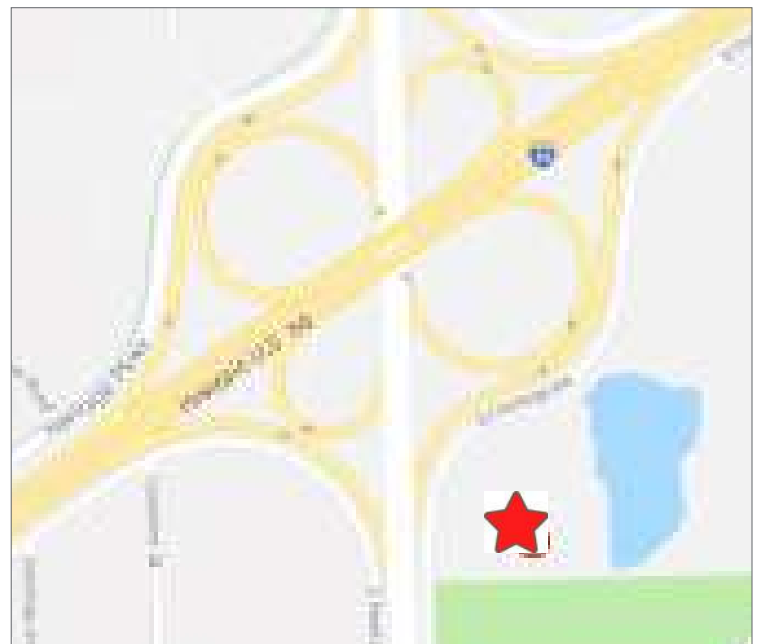
940 S Frontage Road

WOODRIDGE | ILLINOIS



Move-in Ready Office Suite

- Single-story office space with private tenant entry
- 2,279 square feet available
- Asking Rental Rate: \$12.50/SF Net
- CAM: \$2.49 | Taxes: \$2.66
- Building size +/- 50,424 sf
- Recently renovated parking lot
- Masonry construction built in 2000
- Excellent window line with south & west exposures
- Well-landscaped grounds
- Immediate access to I-55 / I-355 via Frontage Road and proximity to two 4-way interchanges
- Parking ratio 3.9 | 1000
- Scenic location with pond views and proximity to Waterfall Glen Forest Preserve



For leasing information

Adam Johnson

630 317 0729

ajohnson@hiffman.com

Ryan Maher

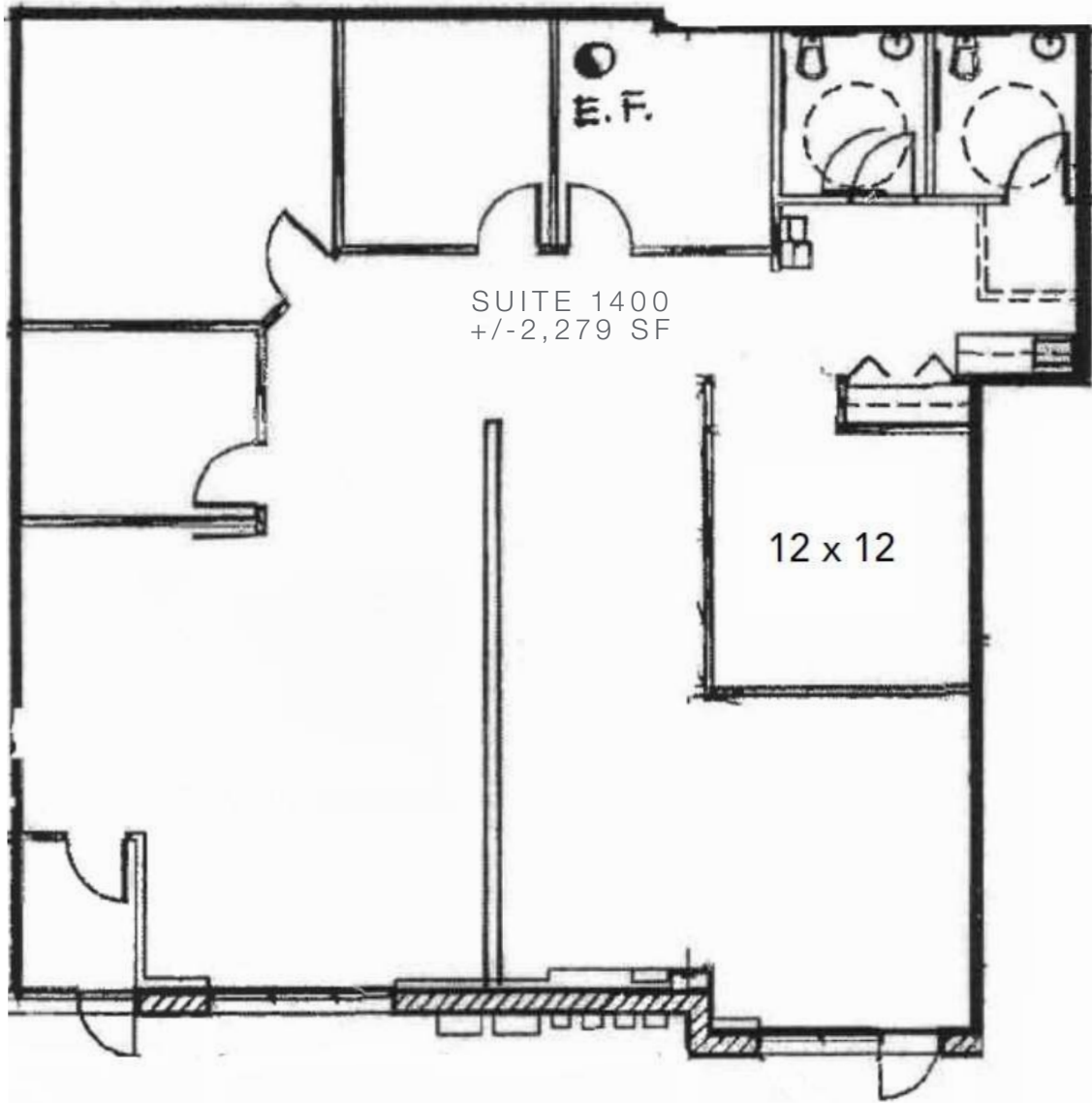
630 693 0677

rmaher@hiffman.com

2,279 SQUARE FEET AVAILABLE

940 S Frontage Road

WOODRIDGE | ILLINOIS



For leasing information

Adam Johnson

630 317 0729

ajohnson@hiffman.com

Ryan Maher

630 693 0677

maher@hiffman.com

NAI Hiffman

©2019 NAI Hiffman. All rights reserved. All information contained herein is from sources deemed reliable; however, no representation or warranty is made to the accuracy thereof.